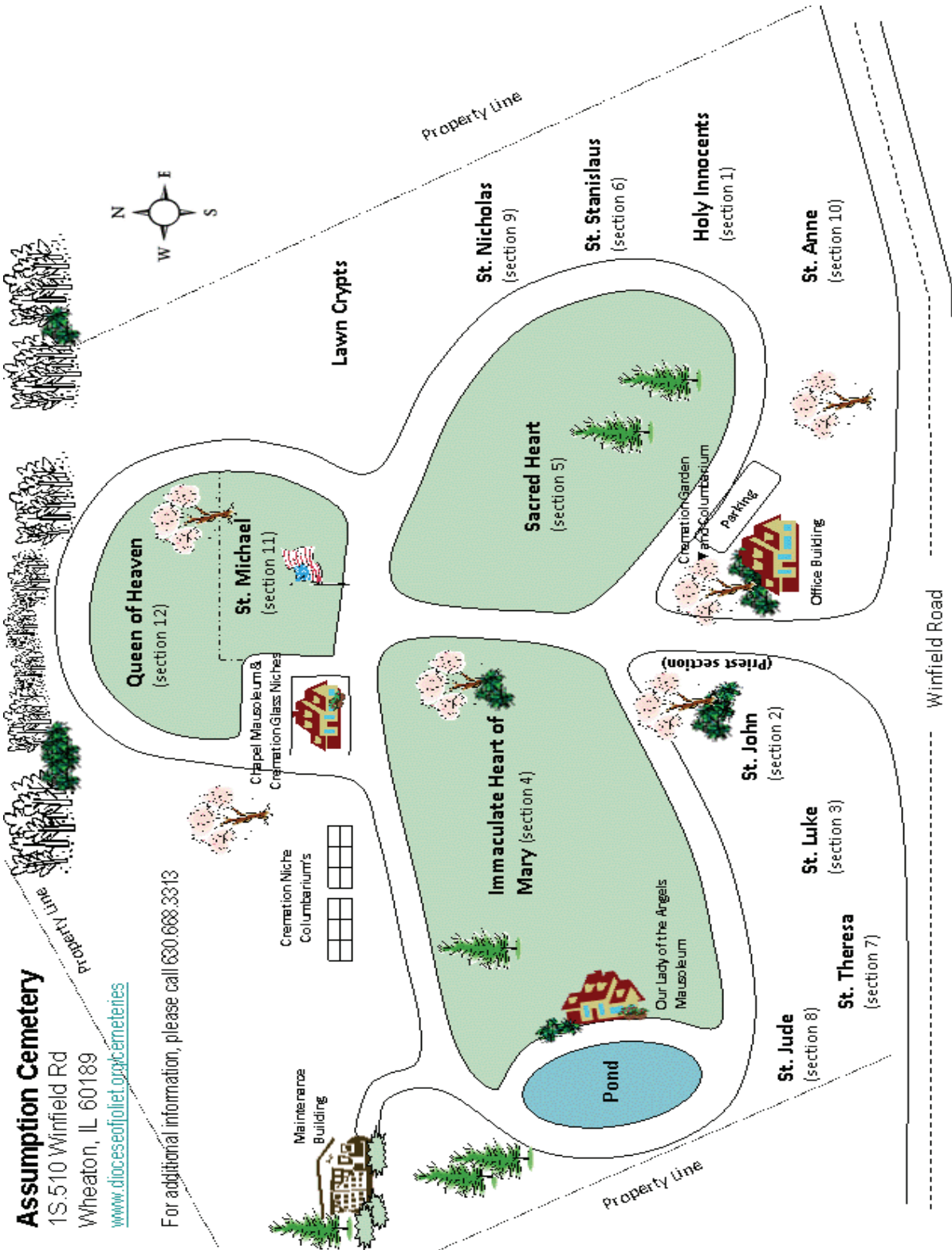


Assumption Cemetery

1S.510 Winfield Rd
Wheaton, IL 60189

www.dioceseofjoliet.org/cemeteries

For additional information, please call 630.668.3313



NAME _____ SECTION _____ LOT _____ BLOCK _____ GRAVE _____

Assumption Cemetery & Mausoleum
15.510 Winfield Rd
Wheaton IL 60189
630.668.3313 fax 630.668.0204

Offering

- Immediate Need & Pre-need Services
- Complete Burial Packages
- Private Estate Mausoleum Structures
- Community Mausoleum Structures
- Lawn Crypts
- Cremation Niche options
- Cremation Gardens
- Ground Burial Space
- Personalized and Custom Memorials
- Graveside or Chapel Services for final committal
- Perpetual Care

Grounds Keeping Guide



CATHOLIC CEMETERIES *of the* Diocese of Joliet
www.dioceseofjoliet.org/cemeteries

Grounds-Keeping Guide

This grounds keeping guide, is designed for your protection, and to preserve the reverence, serenity, and beauty of our cemetery.

General Guidelines

Our sacred grounds are maintained on a regular basis during the growing season for the best appearance of your loved ones gravesite and cemetery. ITEMS are removed when they become unsightly, withered, or if they fail to comply with size and/or material limitations.

Our wish is to be as sensitive as possible to your needs in allowing you to express your grief and love in adorning your loved ones gravesite, keeping in mind the reverence and beauty of the entire cemetery.

SPRING CLEANUP—March 1st

is the traditional time used by the cemetery to clean the grounds and prepare the cemetery for Spring. ALL ITEMS will be removed and disposed of. If you wish to retain your items, it is your responsibility to have it removed before March 1st.



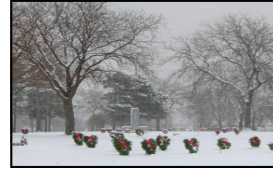
FALL CLEANUP—October 1st

Is the traditional time used by the cemetery to prepare the grounds for winter. ALL ITEMS will be removed and disposed of; ALL bronze floral vases will be inverted into their ground well to prevent them from freezing/cracking, and to prevent damage to our equipment during the winter months of operation. If you wish to retain your items, it is your responsibility to have it removed before October 1st.

PROBLEMS BEYOND OUR CONTROL—Since the cemetery is open to the public, it is very difficult to control the activity of every visitor. We regret that we cannot guarantee items from damage or disappearance. *We'd advise you not to place any objects of sentimental value.*

FUNERAL FLOWERS— will remain at the grave for three days, at which time they will be removed and disposed of. Any floral urns, vases, ribbons, etc. that the family desires to keep should be removed immediately following the funeral service.

VASES—Only approved bronze vases are permitted. Each year around April 1st you can safely raise the vase, but must be lowered (inverted) into the ground October 1st of each year. This is protect the vase from severe damage from the winter elements and winter operations.



FLOWERS AND PLANTINGS—Families with an upright monument space may plant ANNUALS (not perennial's) directly in front of their monument.

The flower bed **may extend** one foot out from the front of the monument, nor should it extend out any further to the side of the base of the monument.



Families are to provide regular care of plantings; otherwise, removal will be necessary should unsightliness prevail. ALL OTHER PLANTINGS ARE STRICKLY PROHIBITED AND WILL BE DISCARDED. THIS INCLUDES UNAUTHORIZED TREES, BUSHES, ROSE BUSHES, ETC.

NO PLANTING IS ALLOWED for flush (flat) lawn level markers. Riding mowers cut all flush level marker areas. Any plant or other material—object would interfere with the mowers and will be removed and discarded.

WINTER HOLIDAY WREATHS/TREES are available for purchase through our cemetery office. These items are usually placed beginning the last part of November by our grounds crew. To be added to our mailing list please contact our office.

OTHER RESTRICTIONS:

Items not specifically permitted herein will be removed including: Shepherd hooks, any items made of glass, ceramic pieces, metal objects, as they are a dangerous hazard to cemetery machinery, personnel, and visitors. NO Outlining of graves or memorials with flowers, rocks etc. NO Christmas evergreen grave blankets. NO Edging stones or fencing material. NO Decorative rocks. Please park on the roadway, not the grass.



Available for purchase through our website or our office:

- **Artificial Floral Bouquets**— These bouquets can be placed directly in the ground or in a bronze vase.



- **Approved Bronze Vase** — on granite base.



- **Christmas Winter Wreaths/Tree's**—on easel.



If your loved ones gravesite needs attention please call us for assistance at: 630-668-3313